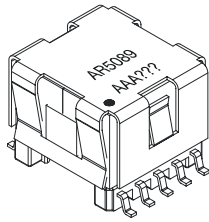


# Inductor for POTS Splitter Application



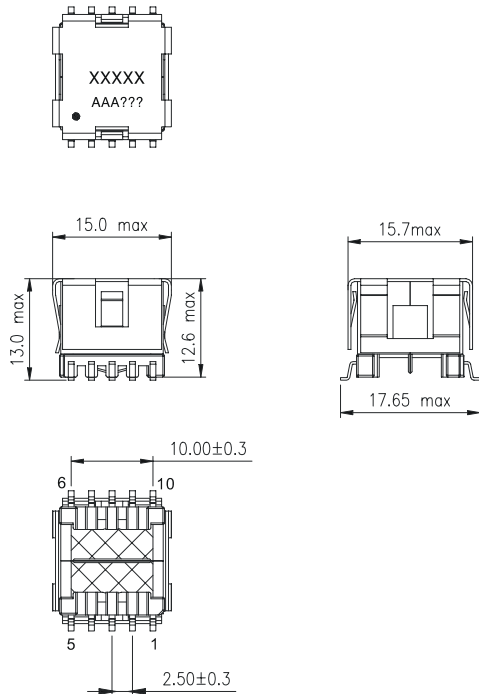
★ Use For POTS Splitter Application

★ Stable Inductance with DC Bias

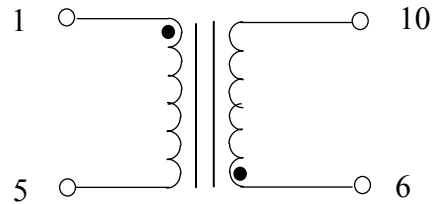
★ Small Packages in EP13 SMD Type

Specifications						
Part Number	Application	Inductance@100mA (mH)	Inductance (mH)	Turn Ratio (±2%)	DCR (Ω Max)	Hi-Pot (Vdc)
AR5089 -EP13CL	Inductor	(1-5) 5.0mH±7% (6-10) 5.0mH±7%	(1-10) 20mH,(5-6) shorted ±5%	(1-5)/(6-10)=1.00	(1-5)=(6-10) < 5.5	500

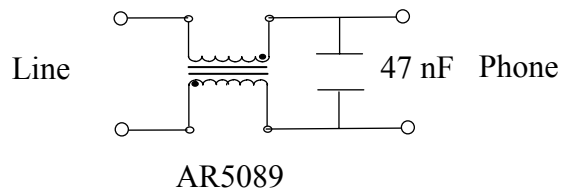
## Dimension



## Schematic



## Filter Application



Data sheet subject to change without notice