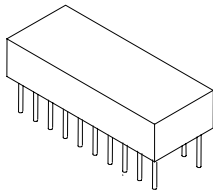


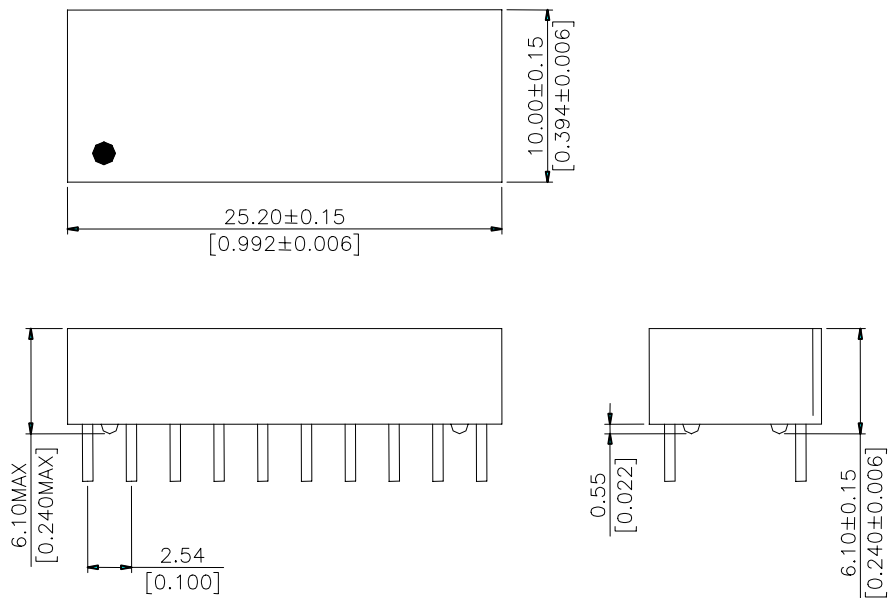
**10/100 Dual Port Transformer Modules**



- ★ Designed to meet IEEE802.3u requirement
- ★ Primary inductance 350μH min. with 8mA DC Bias
- ★ Single Port for NIC or Hub Application

<b>Specifications</b>										
Part Number	Turn Ratio		Insertion Loss 1~100MHz (dB MAX)	Return Loss (MHz)			CMRR (dB)			Hi-Pot (Vrms MIN)
	Tx	Rx		30MHz	60MHz	80MHz	30MHz	50MHz	100MHz	
HT2001	1:1	1:1	1.0	-20db	-15dB	-12dB	-42db	-40dB	-35dB	1500
HT2002	1:1	1:1	1.0	-20db	-15dB	-12dB	-42db	-40dB	-35dB	1500
HT2003	1:1	1:1	1.0	-20db	-15dB	-12dB	-42db	-40dB	-35dB	1500
HT2004	1:1	1:1	1.0	-20db	-15dB	-12dB	-42db	-40dB	-35dB	1500
HT2005	1:1	1:1	1.0	-20db	-15dB	-12dB	-42db	-40dB	-35dB	1500
HT2006	1:1	1:1	1.0	-20db	-15dB	-12dB	-42db	-40dB	-35dB	1500

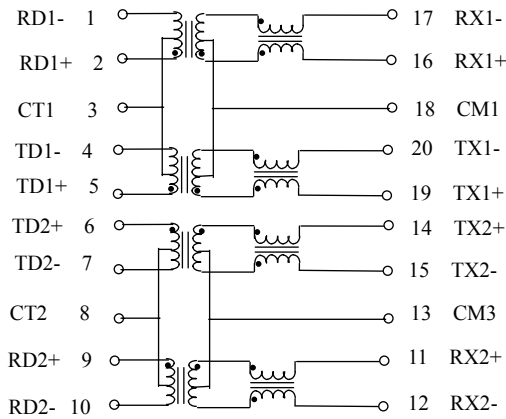
**Dimension**



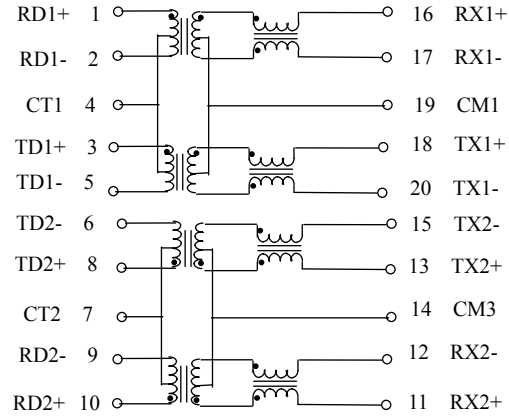
Data sheet subject to change without notice

**Schematic**

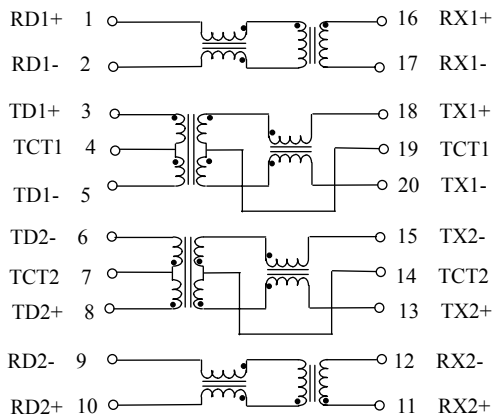
**HT2001**



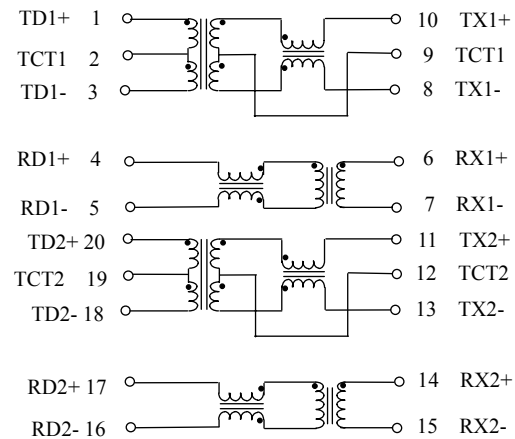
**HT2002**



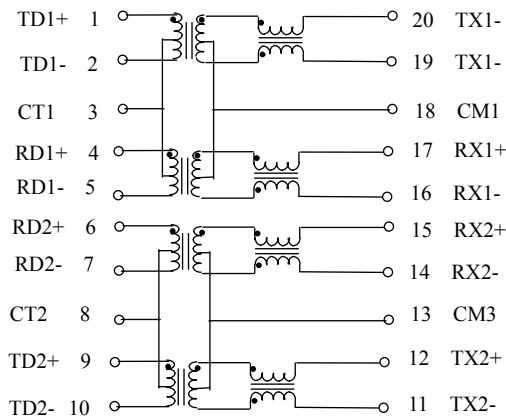
**HT2003**



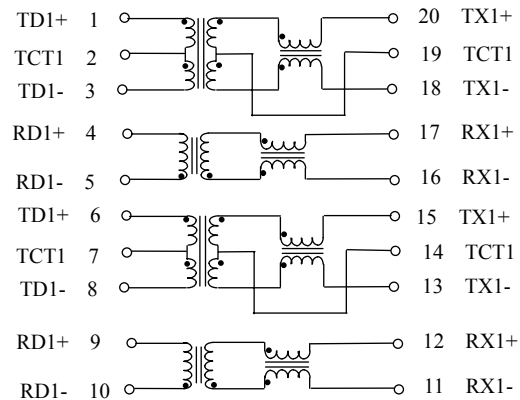
**HT2004**



**HT2005**



**HT2006**



Data sheet subject to change without notice